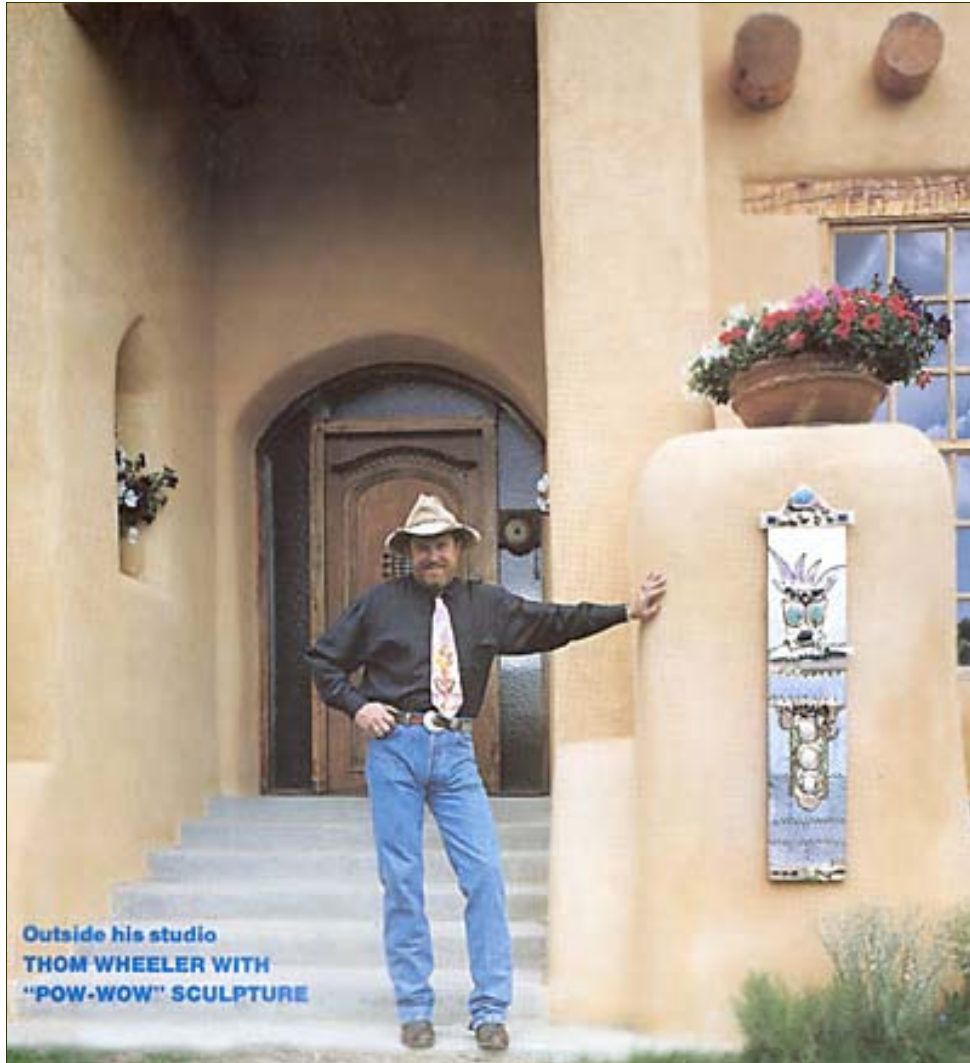


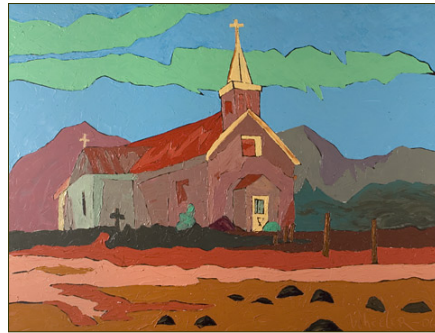
THOM WHEELER



Thom Wheeler Studio Gallery
939 Kit Carson P.O. Box 370
Taos, NM 87571
(505) 751-7220 ~ (505) 758-8870
thom@thomwheeler.com

Thom's career began many years ago in Houston. When he first started out he worked primarily in stone and wood. He then came up with an idea of making metal bases to support the pieces. People liked his style and encouraged him to combine wood with metal to create monumental size sculptures. Then the commissions started coming in and the rest is history.

Early in his career Thom's primary focus was on doing commissions all over the United States, working with designers and architects, on large scale projects. His sculpture was used to embellish restaurants, hotels, offices and yachts. The size of these pieces allowed him more canvas to interpret the feeling his client wanted to convey and incorporate into the space. He still enjoys that area of creativity. Recently he has completed two donor walls for hospitals in Taos and Fort Worth.



Twenty years ago Thom left the big city for Taos. Since arriving here his style has taken a noticeable turn. Gone are the themes of the oil and gas industry, and welcomed are works with a more southwestern flair. He creates now in aluminum, bronze and copper wall sculptures that resemble giant pieces of jewelry, embellished with a variety of semi-precious stones, found rocks or cast glass. Thom doesn't ever get bored with projects he's working on. Every six months he likes to come up with new designs or themes and present them in the gallery in a cohesive group. New ideas are sparked from chance meetings, good books or a walk in the local cemetery. After a recent trip to South Beach he came up with the "Faces in the Crowd" series, an art deco inspired grouping that has once again led him in a new direction.



One of Thom's newest fascinations has developed after receiving a commission for a set of patina copper doors. These massive doors depicted a scene from the client's home of the Sister Peaks in Oregon. In order to portray the scale, a combination of 20 different colors of patinas were used.

Now Thom has a series of smaller copper pieces, mostly abstract, using a combination of pointed and patina copper that can hang either inside or outside a home.

Also new is the addition of sand-cast metal. Thom completed his foundry in 2003 and has rapidly developed his own style of casting. He now incorporates these dimensional pieces into many areas of his work.

Thom has gained a lot of recognition for his religious themed art. His knowledge and fascination with history and a variety of religions have taken him in various directions. He enjoys mixing southwest motifs of Native American beliefs with those of other religions to cast a more modern approach on how we view religion in our lives. A Celtic cross can have a Zuni bear embedded in the middle, or a butterfly might flutter onto a star of David. Anything is possible.



Thom is an artist who whole-heartedly enjoys his work and welcomes guests to visit his studio, which is open on a daily basis. You can watch him cut, grind and polish metals, While visiting with the animals that gather around hoping for a friendly hand to pet them. Just head west on Kit Carson Road, about 1 mile, and look for the 38,000 brick adobe home on the left.

Thom Wheeler Studio Gallery
939 Kit Carson P.O. Box 370
Taos, NM 87571
(505) 751-7220 ~ (505) 758-8870
thom@thomwheeler.com